



*Drosera prolifera* C. White (Sect. Arachnopus)

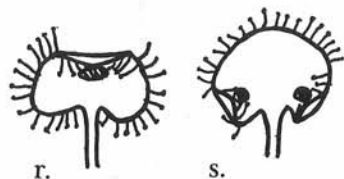
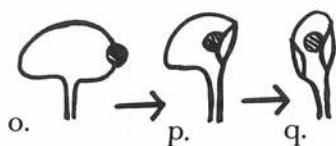
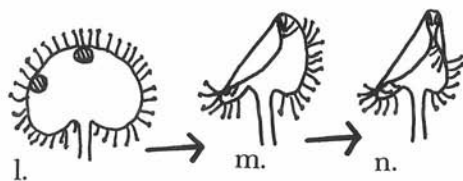
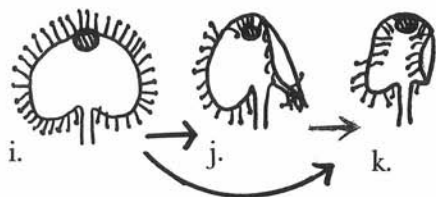
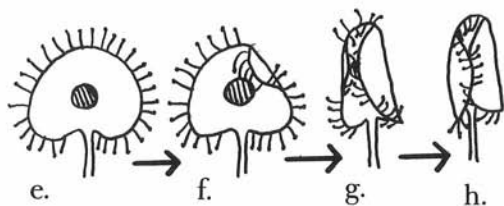
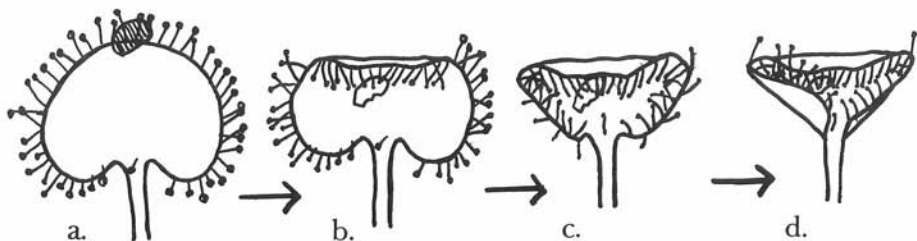
Photos by Yoshiaki Katagiri



*Drosera prolifera* C. White (Sect. Arachnopus)

# The Leaf Blade Movement of *Drosera prolifera*

by Yoshiaki Katagiri  
 3-1-8, Inaba, Kameda-machi,  
 Nakakambara-gun, Niigata-pref.  
 950-01 JAPAN



a. mature leaf  
 b. after 29 hours  
 c. after 52 hours  
 d. after 76 hours  
 f. after 15 hours  
 g. after 23 hours  
 h. after 29 hours  
 e., i. young leaf  
 r. mature leaf

e., i., l., o. = young leaves, food placed in different locations.

● is a cheese or an insect.